

LV JUICE

RDRSS

DUCT SEALING SYSTEM FOR POWER CABLES

Avoid flooding from unsealed cable pipes and ducts. Raychem's Rayflate Duct Sealing System has been designed for use on power cables to provide a watertight seal when used with plastic, concrete or steel ducting systems. Once installed the seals can provide immediate access in clean and dry conditions, eliminating the need to pump manholes dry before work can begin.

FEATURES

- Versatile wraparound suitable for new cable installations or existing applications
- Installation in a few minutes
- Each Rayflate seal covers a large range of cable and duct diameters
- Can be installed with water flowing out of the duct, saving installation time
- Quick and easy removal from a duct or pipe by deflation
- Environmentally friendly - no resins
- Performance tested
- Ideal for substation basements, cable vaults, & access manholes

The Rayflate seal consists of an inflatable bladder coated on both sides with a sealant strip. After the product is wrapped around the cable and slid into the duct the bladder is inflated with a gas pressure tool, pressing the sealant coating against the duct wall and the cable. An automatic gel valve system reliably retains the gas pressure in the seal.



This Month

EUREKA ARC FLASH GLOVES PAGE 2

FLUKE METER DEALS PAGE 4

FAMATEL INDUSTRIAL PLUGS & SOCKETS PAGE 8

FREE BIO CUBE VEGE GROWING KIT

WHILE STOCKS LAST

When you spend over \$300 (+GST) on one invoice this month





ARC FLASH GLOVES

THE DANGER ZONES

Depending on the complete electrical system lower voltage systems can be just as dangerous as higher voltage systems

EUREKA 13-4HFR ARC RATED WORK GLOVES

FEATURES

- Flame resistant
- Optimized for medium Arc Flash risks
- Improved Dexterity
- Perfect in tough working conditions with high spark, heat and flame risks
- High performance in cut resistance
- Cat II
- Arc Flash ASTM F2675, ATPV = 30 cal/cm² palm, 5.8 Cal/cm² back of hand



INDUSTRIES EXPOSED TO ARC FLASH RISKS

- Power generation
- Power line maintenance
- Electrical maintenance
- Railways

ARC FLASH INTENSITY

The expected intensity of an arc flash incident can be calculated by engineers who have access to the properties of their electric installations. It is not always that the highest voltage is the most dangerous!

ATPV PROTECTION AREAS EXPLAINED

INTERMEDIATE AREA

Partially protected by the ablative effect of the print and coating. Protection estimated between 10-15cal/cm²

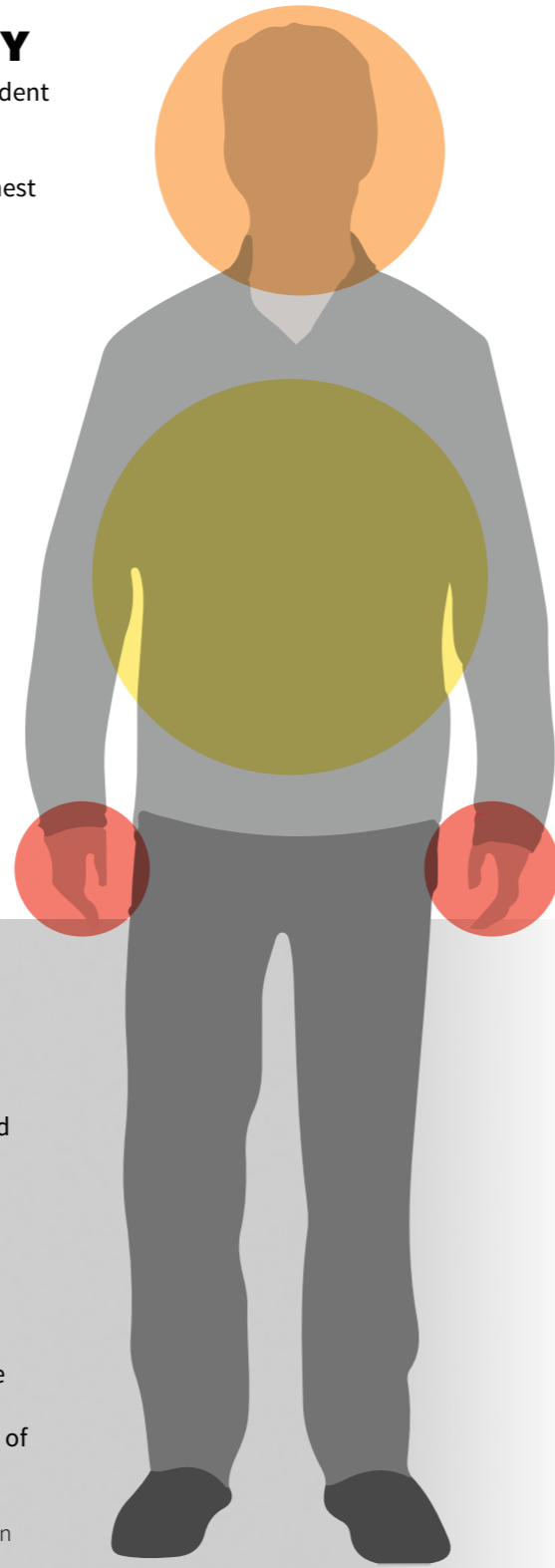
COATING

Provides additional protection ATPV 30 cal/cm²

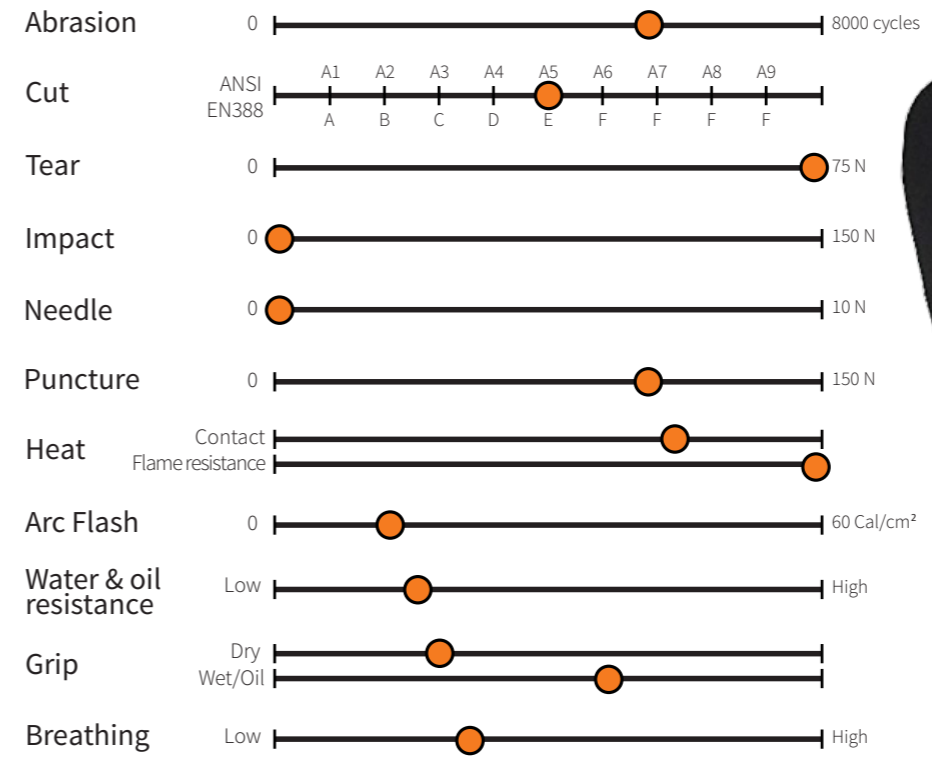


DURABLE SPECIAL PRINT

Highest protection through ablative effect and reflection of radiation ATPV 23 cal/cm²



TECHNICAL PROPERTIES



- Actual fabric thickness of 0.8-0.9mm corresponds to certificate AND real gloves!

BODY PARTS MOST AT RISK

1. Hands

Are by far the most exposed body part and suffer the highest number of injuries

2. Face

After hands, the face is the second most exposed!

3. Body

Although the body can take more damage and is usually more protected, the risk of dying increases drastically if 70% or more of the skin is burnt

Severity of injury reduces by the square of the distance. Double the distance from the explosion equals four times less energy

ARC FLASH
 ASTM F2675, ATPV= 30 Cal/cm² (Palm)
 5.8 Cal/cm² (Back of Hand)

HOW TO ORDER

Cat No.	Description
13-4HFR	FLAME RESISTANT ARC FLASH GLOVES

Use suffix for size: -XS, -S, -M, -L, -XL, -2XL





FLUKE-T5-600

Voltage, Continuity, & Current Tester

The T5-600 Electrical Tester is a versatile troubleshooting tool you can carry to every job site. Use it to check voltage, continuity, and current, all with one compact, rugged tool. Just select volts, ohms, or current and the tester does the rest.

Key Features

- Meter automatically selects AC or DC voltage, up to 600 V
- Measure current up to 100 A without breaking the circuit
- Resistance measurements up to 1000 Ω plus continuity test
- Work in tight spaces with detachable SlimReach™ probe tips
- Open Jaw current technology
- Compact all in one tool
- Continuity and beeper
- Sleep mode
- CAT III/600V rated
- Resistance
- Continuity

\$236.00
+ GST



FLUKE-T5-1000

Voltage, Continuity, & Current Tester

The T5-1000 is a versatile troubleshooting tool to carry to every job site. Use it to check voltage, continuity, and current with one compact tool. Just select volts, ohms, or current and the tester does the rest.

Key Features

- Automatically measure AC and DC voltage up to 1000V with precise digital resolution
- Measure current up to 100A without breaking the circuit with OpenJaw™ design
- Troubleshoot resistance problems up to 1000 Ω
- Work in tight spaces with detachable Slim Reach probe tips
- Open Jaw current technology
- Compact all in one tool
- Built in continuity beeper provides fast and easy go/no-go tests
- Sleep mode
- CAT III/1000V rated
- Suitable for industrial applications

\$278.00
+ GST



FLUKE-T6-600

Voltage, Continuity, & Current Tester

The Fluke T6-600 lets you test where it used to be impossible by measuring voltage and current through the open jaw. You can measure voltage (not just detect voltage) without making metallic contact with a live conductor.

Key Features

- Measure AC voltage, current, frequency without touching a live wire
- Troubleshoot with all power supply measurements at-a-glance
- See AC voltage and current values without test leads
- Measure voltage and current simultaneously
- Measure in tight spaces without test leads
- Save time by taking measurements without needing to remove covers and wire nuts
- Make measurements with one hand, reducing risk
- Easy to read display with backlight
- Withstands a 3m drop
- Detachable Slim Reach probe tips are customized for national electrical standards
- TPAK Compatible

\$362.00
+ GST



FLUKE-1662

Multifunction Installation Tester

The Fluke 1662 gives you reliability, simple operation, & all the testing power you need for basic installation testing.

Key Features

- Voltage TRMS (AC & DC) & frequency
- Wiring polarity checker, detects broken PE and N wires
- Insulation resistance
- Continuity and resistance
- Continuity test (@ 10 mA)
- Loop and line resistance
- Prospective Earth Fault Current & Prospective Short-Circuit Current
- RCD trip time & trip current (ramp test)
- Measures trip time and current for RCD type A and AC in one test
- RCD variable test current
- Automatic RCD test sequence
- Phase sequence test
- On/Off switchable Auto Start for RCD and Loop test
- Self-test
- Illuminated display
- Memory
- Hard case
- Remote control probe
- Zero adaptor

\$1822.00 + GST

FLUKE-1664FC

Multifunction Installation Tester

The Fluke 1664FC puts a lot of testing power in your hands to quickly and efficiently test to all local regulations. It can protect appliances from damage with Insulation PreTest, which stops tests when connected appliances are detected, and share test results in real time over your smartphone. It also allows you to save your test results to Fluke Cloud™ storage, a fast, secure and accurate way to storing all your test data and create test certificates with Fluke DMS.

Key Features

- All FLUKE-1662 features PLUS:
- Insulation-PreTest safety function
- Insulation at L-N, L-PE, N-PE inputs
- Auto Test sequence
- Loop and line resistance—mΩ resolution
- Continuity at L-N, L-PE, N-PE inputs
- Test smooth dc sensitive RCDs (Type B/B+)
- Earth resistance
- Fluke Connect® compatibility
- ShareLive™ calling
- Fluke Cloud™ storage

\$2950.00 + GST



FLUKE-376FC

True RMS AC/DC Clamp Meter with iFlex

The Fluke 376FC is an advanced troubleshooting tool for industrial and commercial electricians. It enables you to log, trend and monitor measurements remotely while keeping a safe distance from the arc flash zone.

Key Features

- Remotely pinpoint intermittent faults via Fluke Connect®
- Inrush measurement to filter out noise & capture motor starting current
- AC/DC current to 1000A & AC current to 2500 A with iFlex current probe (included)
- Integrated VFD low pass filter
- Troubleshoot problems safely & efficiently
- CAT IV 600 V, CAT III 1000 V safety rating
- Flexible current probe provides access to large conductors in tight spaces
- Frequency measurement to 500 Hz
- Resistance measurement to 60 kΩ with continuity detection
- Min, max, average, & inrush recording to capture variations automatically
- 500 mV dc measurement range
- 1000 μF capacitance measurement

\$855.00 + GST

TRANSNET MONTHLY GIVEAWAY SUPPORTING KIWI BUSINESSES

Being proudly carbon neutral we're constantly striving to better our environment, so this month we're supporting Wellington company PromoGreen. With over 20 years' experience in horticulture and marketing

they make eco-friendly promotional products. This month's giveaway is their Bio Cube – a bio-degradable pot containing seeds, soil, and instructions to cultivate your own garden. As our staff

www.promogreen.co.nz

grow produce in our onsite garden it's an exciting product to offer. Each cube contains a vegetable variety of capsicum, lettuce, carrot, or tomato seeds, ready for you to plant and enjoy!





LV BI-METAL MECHANICAL LUGS

A TRULY BIMETALLIC FRICTION WELDED CONNECTOR

VCXI lugs consist of an aluminium barrel linked to a copper palm by friction welding technology. The aluminium barrel is provided with a shear head bolt controlling the tightening torque.



**VERSATILE
RELIABLE
QUICK**

**Compact
Palm**

FEATURES & BENEFITS

- Accepts aluminium and copper cables
- Copper palm compatible with the palms of the apparatus to be connected
- 5 lugs will connect from 25 to 500mm²
- Can be fitted into the new generation of compact type circuit breakers
- Inner surface of aluminium barrel is grooved at the manufacturing stage and greased to ensure a good electrical contact with wire to be joined
- Tightening torque controlled by shear head system
- No special tooling needed
- Only one bolt to tighten

APPLICATIONS

- For indoor LV applications up to 1kV
- LV connection on busbar inside electrical panel and on compact type circuit breaker (new generation)

Complies with IEC 61238-1 class B for electrical tests, IEC 61238-1 for tensile tests.

Cat No.	Cross Section Range (mm ²)		Stud Size
	Aluminium	Copper	
VCXI-11-M6	25-70	25-50	M6
VCXI-14-M10	50-120	50-95	M10
VCXI-18-M10	95-185	95-120	M10
VCXI-22-M12	150-300	150-185	M12
VCXI-29-M16	240-500	240	M16



BSLB LV MECHANICAL CONNECTORS

LV MECHANICAL CONNECTORS FOR ROUND & SECTOR CABLE - BLOCKED



FEATURES & BENEFITS

- Can be used with almost every type of conductor and material
- Fully compliant to the new specification DIN 47640
- Bodies and shear off bolts made of high strength Aluminium alloy
- Cross-grooved conductor channels for improved long term contact performance
- Bodies, with rounded edges, completely electro-tinned
- Bolts with outer hexagonal head, waxed for better installation
- Unique design with round bores & milled notches to allow installation of sector-shaped conductors without rounding
- Blocked for barrier against moisture transfer
- Successful qualification according to IEC-61238-1 Class A
- Bimetal, Al-Al, & Cu-Cu connections

BSLB LV Mechanical Connectors are perfect for a range of conductors such as round and sector solid/stranded 3 core and 4 core. These connectors are also range taking, reducing the inventory list required to cover all possible sizes. Made from High Strength, Tin Plated Aluminium Alloy, these connectors are made to the highest international standards & offer excellent reliable connections for LV installations up to 1kV.

Cat No.	Size Range (mm ²)						Contact Bolts	
	AL Solid		AL Stranded		CU Stranded		Qty	Head Size AF (mm)
	Circular	Sector	Circular	Sector	Circular	Sector		
BSLB-4/16	-	-	-	-	4-16	-	2	2.5 HEX
BSLB-10/50	10-50	10-50	10-50	10-50	10-50	10-50	2	10
BSLB-25/150	25-95	25-150	25-95	25-150	-	25-150	2	13
BSLB-95/240	95-240	95-240	95-240	95-240	70-240	95-240	4	10





BRASS EARTH BONDING STRAP

AVAILABLE IN LENGTHS UP TO
50M

Made from H68 brass, TNESTRAP12 is sold by the metre in lengths up to 50m.

Cat No.	Hole Diameter	Strap Width	Distance Between Holes	Spool Length
TNESTRAP12	6mm	12mm	15mm	50m

*Fastenings not included



DOMESTIC WRICON EARTHING SYSTEM

Clause 5.6.2.5 in AS/NZS3000 states: "Any conductive reinforcing within a concrete floor or wall of a room containing a shower or a bath shall be bonded to the earthing system of the electrical installation."

An equipotential bonding conductor, in accordance with Clause 5.6.3, shall be connected between the reinforcing material and any part of the earthing system and the room."

The WRICON Domestic Earthing System has been designed as a reliable and constant electrical earth for this purpose. This provides a direct electrical bond to reinforcing steel mesh in domestic housing concrete foundations.

It can be installed easily, simply and professionally by contractors on site in the form of a clamped or welded connection to the reinforcing mesh.

All Cadweld connections pass IEEE837 Standards.



Cat No.	Description	Conductor Size (mm ²)	Length (m)
TNC-6-CK	DOMESTIC WRICON BARE TAIL INCLUDING CLAMP KIT	6	10
TNC-6-BT	DOMESTIC WRICON BARE TAIL FOR WELDING		

IF IT DOESN'T SAY **WRICON** IT'S NOT



NOW FOR A SHAMELESS PLUG

Famatel Plug & Socket Deals



Auckland

78 Cryers Road
East Tamaki
Auckland
NEW ZEALAND
Ph 0800 442 182
Fax 0800 442 183
PO Box 39 383
Howick, Auckland

Wellington

10 Petone Ave
Petone
Wellington
NEW ZEALAND
Ph 04 576 2530
Fax 04 576 0040
PO Box 39 383
Howick, Auckland
NEW ZEALAND
sales@transnet.co.nz

TransNet Tonga

Nuku'alofa

Lakalakaimonu Multi Utility
Complex
Taufa'ahau Road
Poutaha
Nuku'alofa
TONGA
Ph +67 627 939
Fax +67 627 976
PO Box 2932
Nuku'alofa
TONGA
transnet@kalianet.to

FAM14305

IP67 63A PLUG
3P+N+E

\$49.00 +GST

FAM24305

IP67 63A CONNECTOR
3P+N+E

\$55.00 +GST

FAM24395

IP67 63A SURFACE OUTLET
3P+N+E

\$63.00 +GST

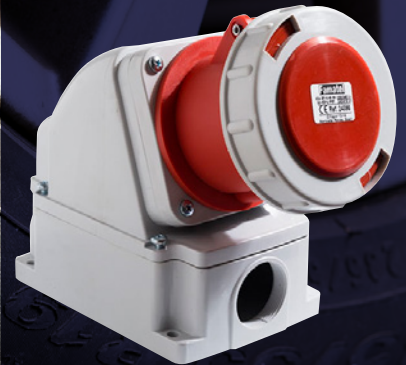
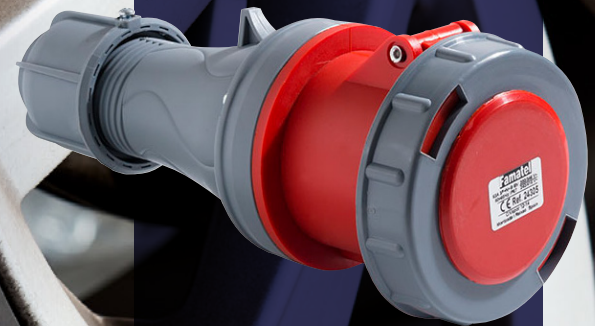
FAM25007

IP67 63A SWITCHED OUTLET
3P+N+E

\$349.00 +GST

Famatel industrial plugs and sockets are ergonomically designed for ease of use and made from materials carefully selected for operation in harsh environments requiring high mechanical resistance.

famatel
PROFESSIONAL



TransNet NZ Ltd has made every reasonable effort to ensure the accuracy of this information and it is to the best of our knowledge correct and reliable. Under no circumstances does this constitute an assurance of any particular quality or performance and users should independently evaluate the suitability of products for their desired application. All information in this publication including pricing, drawings, illustrations, images and graphic designs are reflections of our current understanding. TransNet NZ Ltd reserves the right to make any adjustment to this information at any time. Our liability for the products outlined in this publication is set forth in our standard terms and conditions of trade. In case of any potential ambiguities or questions, please contact us for clarification.